



St. George's University

SCHOOL OF MEDICINE

Grenada, West Indies

Train to Become a Doctor at St. George's University (SGU)

**The Largest Provider of New Doctors
to the US Healthcare System¹**

1. As the medical school graduating the largest number of students per year, SGU places the largest number of graduates into residency programs each year, based on internal SGU graduate/expected graduate and residency placement data as of March 2024.



SGU campus in Grenada, West Indies

Selecting the right medical school starts with choosing your preferred career destination. Where do you want to become a practicing doctor?

You should select a medical school that will best enable you to practice in your preferred country.

To become a doctor in the United States (US), you need to consider important criteria including completing a US residency (postgraduate training), access to clinical rotations, and accreditation.



US Residency

To practice medicine in the US, you must earn a Doctor of Medicine (MD) and complete a postgraduate residency, in addition to other requirements.

For the tenth year in a row, SGU secured more US residency positions than any medical school in the world.¹



Scan to learn more



Access to Clinical Rotations

Access to clinical rotations in the US will support your application for US residency.

Students at SGU can complete clinical and ambulatory training in 75+ hospitals and health systems in the US and UK.²



Scan to learn more



Accreditation

SGU School of Medicine has been continuously accredited for decades, enabling students to be eligible to practice in the US.



Scan to learn more

1. As the medical school graduating the largest number of students per year, SGU places the largest number of graduates into residency programs each year, based on internal SGU graduate/expected graduate and residency placement data as of March 2024.

2. sgu.edu/hospitals

About SGU School of Medicine

22,000+

School of Medicine graduates
have entered the US health system.¹

Largest

provider of new doctors
to the US healthcare system.²

90%

USMLE Step 1 Pass Rate
for international first-time test
takers over the last five years.³

88%

US residency placement rate
for international graduates over the
last five years.⁴

Hear from an SGU Graduate



“ My main motivation for applying was that I was keen to practice medicine in the US and saw that SGU would give me that opportunity. ”

Ish Saxena, MD
Four-Year MD Program
SGU Class of 2013

1. Based on the number of students who have completed the Doctor of Medicine Program from 1981-2023.
2. As the medical school graduating the largest number of students per year, SGU places the largest number of graduates into residency programs each year, based on internal SGU graduate/expected graduate and residency placement data as of March 2024.
3. Total results from the five calendar years 2018-2022. First-time pass rate is defined as the number of international (non-US citizen/permanent resident or Canadian) students passing USMLE Step 1 on their first attempt divided by the total number of international students taking USMLE Step 1 for the first time within the given time range. In order to be certified to take USMLE Step 1, students are required to pass all basic sciences courses.
4. Average of 2020, 2021, 2022, 2023, and 2024 residency placement rates. Residency placement rate is defined as the total number of international students/graduates (non-US or Canadian) who obtained a US residency divided by the total number of international students / graduates who applied to a US residency program in a given year as of April 2024.

Train in up to **Three Locations** with SGU

You may begin the MD track in **Grenada or the UK**. These routes provide a strong foundation for SGU's future MD program students. MD program students can complete **clinical rotations in either the US and/or the UK** in the last two years of their studies.



Study Locations



Grenada, West Indies

SGU School of Medicine has a **Four-Year MD Program** and offers **Five-, Six-, and Seven-Year MD Tracks** with entry points available for students from many education systems around the world. By attending SGU, you can enjoy the benefits of a thriving **multicultural environment** on the SGU campus, which offers many **amenities and modern facilities**.



Scan for more information



Newcastle, UK

The partnership between SGU and Northumbria University (NU) offers a **Four-Year MD Program**, with the option to complete one year at NU. The partnership also offers **Five- and Six-Year MD Tracks**. The program and tracks start in Newcastle, UK, allowing you to complete the first part of your education at NU, with an MD degree awarded by SGU.



Scan for more information

SGU Pathway to Doctor of Medicine (MD) Degree

Academic Offerings

- Four-Year MD Program
- Five-Year MD Track
- Six-Year MD Track
- Seven-Year MD Track

Rolling Admission

Grenada:

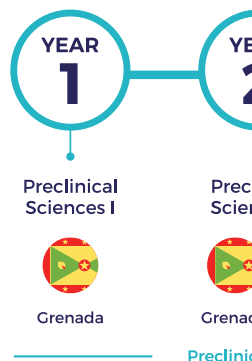
- January
- April
- August

UK:

- January
- September

7-Year MD
Track Start
4-Year MD +
3 Years Preclinical

6-Year
Track
4-Year
2 Years Preclinical



Entry Point

Four-Year MD Program:
Medical Year 1

Five-Year MD Track:
Preclinical Year 3
(Preclinical Sciences III)

Six-Year MD Track:
Preclinical Year 2
(Preclinical Sciences II)

Seven-Year MD Track:
Preclinical Year 1
(Preclinical Sciences I)

Entry Requirements

Bachelor's Degree in the requisite sciences.

Advanced Levels: Minimum 3 subjects with A's and B's in biology with a third strong non-science A Level.

Approved Foundation Programs: SGU recognizes and approves the following foundation programs:

Full IB Diploma: Requires a minimum score of 32 points; 3 HL subjects which must include chemistry and biology; results 5 or higher in biology.

All 10 + 2 India Senior Secondary School Certificate: Minimum 75% in science. A pre-sessional math program may be necessary if math has not been completed.

Secondary School Diploma: Strong science performance.

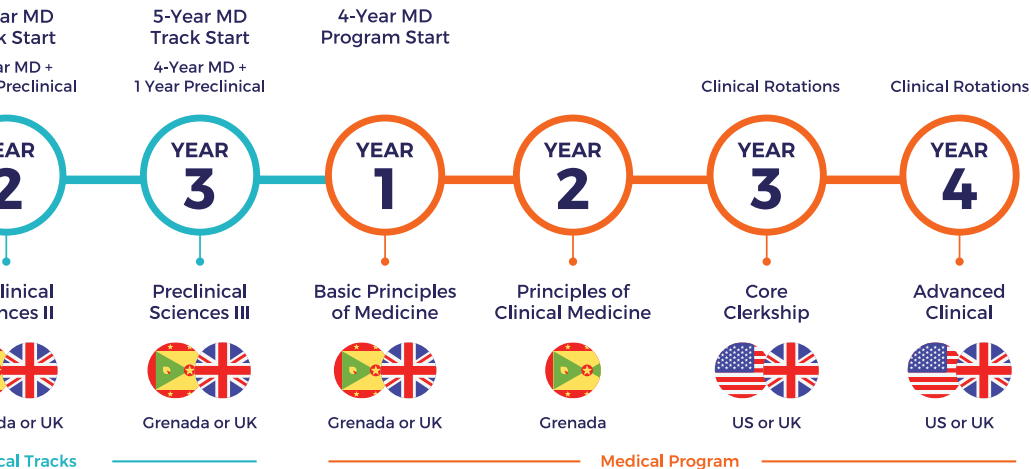
Further education: AS Levels, Baccalaureate, South Africa Matriculation, etc.

BTEC: Diploma must be in the appropriate sciences with grade A or B.

American High School Diploma: AP test grades of 4 or 5 in biology.

1. List of approved English-speaking countries: Antigua and Barbuda, Australia, Bahamas, Barbados, Belize, Canada,² Dominica, Grenada, Guyana, Ireland, Jamaica, New Zealand, St. Kitts and Nevis, St. Lucia, St. Vincent and the Grenadines, Trinidad and Tobago, UK, and US.

2. International students (non-Canadian citizens) who graduated from a Canadian university will require proof of language skills.



biology, chemistry, and either math or physics; math or physics can be accepted at AS Level

provides a range of science/medical pathway programs.

HL science subjects recommended; minimum of 2 HL subjects required, per.

minimum average of 80% average in biology, chemistry, math, physics, and English.¹ not been taken or successfully completed before matriculation.

matric, Higher School Exam, Irish Leaving Certificate.

degrees of Distinction.

biology and/or chemistry.

biology, chemistry, math, physics, and English.

Please note, as an international student:

- Taking the National Eligibility-cum-Entrance Test (NEET) is not required to apply.
- You are exempt from the Medical College Admission Test (MCAT).



English Language Requirements

An English exam is required for any prospective student whose country is not considered English-speaking as per UK Visas and Immigration (UKVI).¹ However, an exception may be granted to students with an undergraduate degree from any English-speaking country—a waiver must be requested from SGU in this instance.

- **IELTS:** 7.0 on each band
- **TOEFL:** 94-101 overall is required for direct entry
(24-26 reading / 24-26 listening / 23 speaking / 27-28 writing)
- **Password-Skills:** Scoring is the same as IELTS scoring for direct entry
- **C1 Advanced:** A score of 185 overall is required for direct entry
- **PTE Academic:** A score of 66.3 overall is required for direct entry
(67.6 reading / 66.2 listening / 65.3 speaking / 82.3 writing)

1. List of approved English-speaking countries: Antigua and Barbuda, Australia, Bahamas, Barbados, Belize, Canada,² Dominica, Grenada, Guyana, Ireland, Jamaica, New Zealand, St. Kitts and Nevis, St. Lucia, St. Vincent and the Grenadines, Trinidad and Tobago, UK, and US.
2. International students (non-Canadian citizens) who graduated from a Canadian university will require proof of language skills.

Annual Tuition Fees (USD) ¹

4-Year MD Program

- **Year 1:**
\$74,528
- **Year 2:**
\$92,130
- **Year 3:**
\$117,423
- **Year 4:**
\$79,231

MD Tracks

- **Five-Year MD Track**
Preclinical Year 3:
\$41,716
- **Six-Year MD Track**
Preclinical Year 2:
\$41,716
- **Seven-Year MD Track**
Preclinical Year 1:
\$41,716



Scan to view
the most
up-to-date rates

1. The figures are based on 2024-2025 academic year rates and are subject to change.

Scholarships For International Students

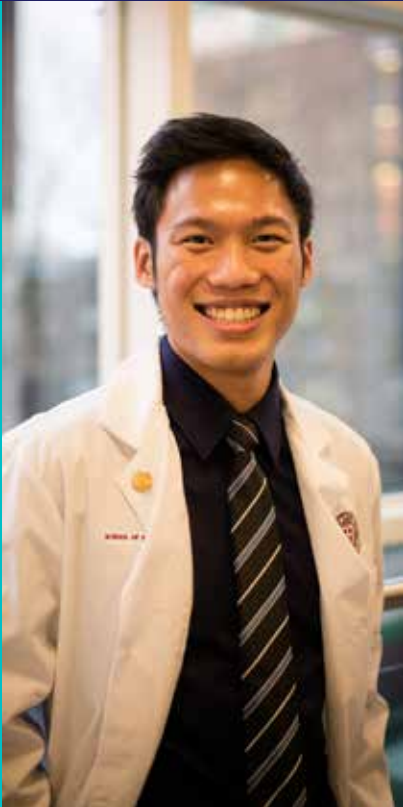
We offer scholarships and other bursary awards exclusively for international students (non-US citizens). This includes:

- **SGU Academic Scholarship**
- **Global Scholars Bursary**
- **International Peace Bursary**

You may be eligible for multiple awards, depending on your circumstances. No separate application is needed—simply submit your application to qualify for eligible scholarships.



Scan for more
information



How to Apply



Start an application: sgu.edu/apply



Submit all academics, letters of recommendation,¹ English exam result,² extracurricular activities, personal statement, and passport scan



Interview



Admissions decision³



Accept offer and submit deposit to secure your spot in the fall, winter or spring intakes



Travel to Grenada or the UK



Start studying medicine



**Scan to start
your application**

1. At least two letters of recommendation are required, one from a teacher or professor.
2. An English exam is required for any prospective students whose country is not considered English-speaking as per UK Visas and Immigration (UKVI).
3. Scholarship eligibility is reviewed after the admissions decision and is not guaranteed.



**Scan or click the QR code
to find out more information
about SCU School of Medicine**





St. George's University

SCHOOL OF MEDICINE

Grenada, West Indies



**Take the first step towards your
dream career in medicine with SGU**



@stgeorgesu



@StGeorgesU



St. George's University



@StGeorgesU



@StGeorgesU



sgu.edu