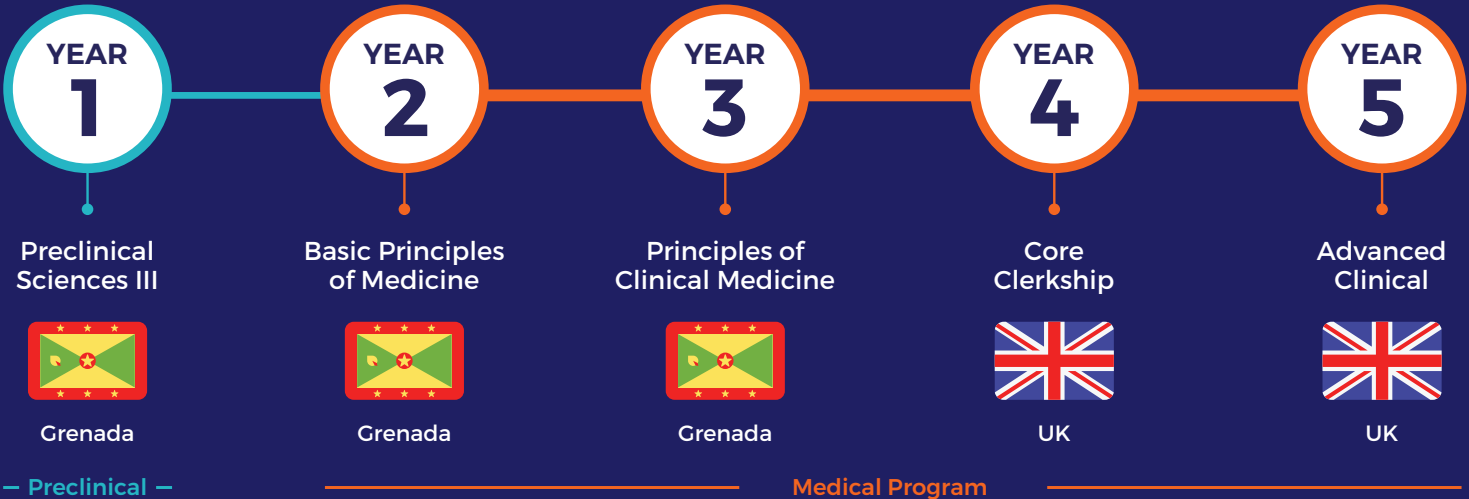


Pathway to Doctor of Medicine Degree

for DTEF-sponsored Top Achiever students in Botswana

5-Year MD Pathway Start
4 MD + 1 Year Preclinical



What can DTEF-sponsored Top Achievers* students in Botswana study at SGU?

For students eligible as Top Achievers under the Botswana Government's Tertiary Education Students Sponsorship, meeting these minimum SGU requirements is also necessary:

Program	Requirements
Entry Requirements for Preclinical Year 3	<p>Start of 5-Year MD pathway</p> <p>Advanced Levels: Minimum 3 subjects with A's and B's in Biology, Chemistry and either Math or Physics; Math or Physics can be accepted at AS level with strong non-science third A level</p> <p>Full IB Diploma: Requires a minimum score of 32 points; 3 HL science subjects recommended; minimum of 2 HL subjects required, which must include Chemistry and Biology; results 5 or higher</p>
English Language Tests	<p>IELTS - 7.0 on all bands</p> <p>TOEFL - A score of 94-101 overall is required for direct entry</p> <p>Password Skills - Scoring is the same as IELTS scoring for direct entry</p> <p>C1 Advanced (CAE) - A score of 185 in each band is required for direct entry</p> <p>PTE Academic (Pearson) - A score of 66.3 overall is required for direct entry</p>
Medical College Admission Test	<p>International students are exempt from the Medical College Admission Test (MCAT) admission requirement. The UCAT is not mandatory, but is a suggestion.</p>

2023 – 2024
Doctor of Medicine (MD)

Start Dates:
Grenada:
January and August every year

Scholarship:
SGU provides a special Dean's Partnership Scholarship* for all eligible DTEF-sponsored Top Achievers students.

*Top Achievers" is the name of the Botswana Government's Tertiary Education Students Sponsorship program as administered by The Department of Tertiary Education Financing commonly referred to as "DTEF", under the Botswana Government's Ministry of Tertiary Education, Research, and Science & Technology.

89%

US Residency Placement Rate

for international graduates over the last three years.¹

94%

USMLE Step 1 Pass Rate

for international first-time test takers over the last three years.²

75+

Hospitals and Health System

in the US and UK offer clinical and ambulatory training.

22,000+

School of Medicine Graduates

who have entered the global healthcare system.³



SGU Admission Process

STEP
1

Submit application
sgu.edu/apply

STEP
2

Submit all academics, letters of recommendation⁴, English exam result⁵, extracurricular activities, personal statement, and passport scan

STEP
3

Interview

STEP
4

Admission decision

STEP
5

Accept offer and submit your DTEF financial guarantee letter to ensure your spot

STEP
6

Travel to Grenada

STEP
7

Start studying medicine!

Accommodation

Grenada: All entering preclinical, as well as medical students, are required to live on campus for their first year. All dormitories are staffed with Resident Assistants (RAs), who foster a community of mutual respect and cooperation.



¹ Average of 2020, 2021, 2022 residency placement rate. International graduates are non-US graduates. Residency placement rate is defined as the total number of students who obtained a US residency divided by the total number of students who applied to a US residency program in a given year as of May 2022.

² Average of 2019, 2020, 2021 scores. First-time pass rate is defined as the number of students passing USMLE Step 1 on their first attempt divided by the total number of students taking USMLE Step 1 for the first time. International students are non-US students.

³ Based on the number of students who have completed the Doctor of Medicine program from 1981-2023.

⁴ At least 2 letters of recommendation required, one from a teacher or professor.

⁵ English exam result required if English is not the principal language, IELTS, TOEFL, C1 Advanced and PTE Academic are accepted.